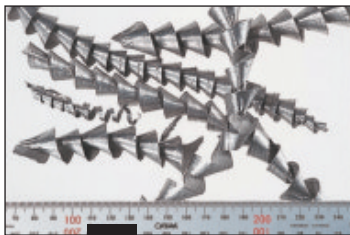


MATERIAL				STEEL OR STAINLESS STEEL		CAST OR DUCTILE IRON	CAST IRON PLUS ALUMINUM	STEEL	BRASS	COMPOSITE	ALUMINUM					
TYPES OF CHIPS (See numbered photographs below)				1	2	3	4	5	5 plus	6	7	8	9	11	10	12
Class	Conveyor model	Nominal filtration	Filtration	Turnings and/or nested chips	Short chips	Short chips	Short chips with some long strings	Grinding sludge (small chips)	Short chips	Small fines	Short chips	Long Strings				
Standard Conveyors	Hinge Belt conveyor	--	--	Good	Good	Fair	Fair	Fair	Good	✗	Fair	Good				
	Clean-Sweep-RM	250 micron	Screen box	Better	Better	Good	Good	Fair	Better	✗	Better	Better				
	Drag conveyor	--	--	✗	Good	Fair	✗	Fair	Good	✗	Fair	✗				
Separator Conveyors	MagSep	98% by weight	Magnets	✗	✗	Best	✗	Better	✗	✗	✗	✗				
	ConSep 2000II (single belt)	50 micron	Drum filter	Best	Best	Better	Better	Good	Best	✗	Best*	Best				
	ConSep 2000 (dual belt)	50 micron	Drum filter	Best	Best	Better	Better	Good	Best	✗	Best	Best				
	ConSep Flex (dual Belt)	50 micron + 98% by weight	Drum filter + magnets	Best	Best	Best	Best	Better	Best	✗	Best	Best				
Filters	HPF	20 - 30 micron	Disposable Media	☎	☎	☎	☎	Best	☎	Best	☎	☎				
	VacuFilter	10 - 20 micron	Disposable Media	☎	☎	☎	☎	Best	☎	Best	☎	☎				

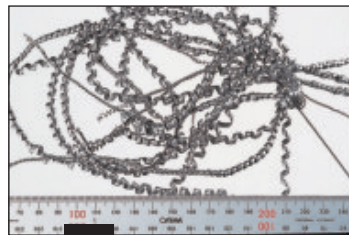
✗ NOT RECOMMENDED

☎ Contact Mayfran for more information

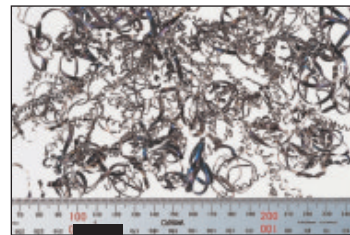
**NOTES:** 1) The selection chart assumes chips will be processed with water-soluble coolant. 2) Short chips are defined as chips less than 2" in length that do not ball-up. 3) Hard turn package is available when machining a hard or abrasive material. 4) Contact Mayfran for information regarding dry chip processing. \*For high chip or coolant volume applications for this material and chip type, Mayfran recommends the dual belt ConSep 2000 in lieu of the ConSep 2000II.



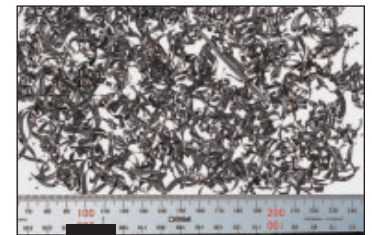
**1** STEEL BORINGS



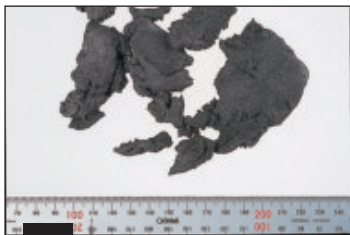
**2** STEEL TURNINGS



**3** STEEL TURNINGS



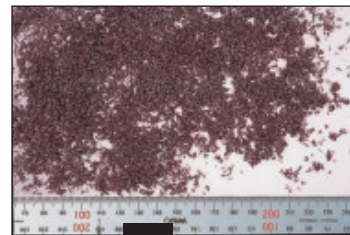
**4** STEEL MILL CHIPS



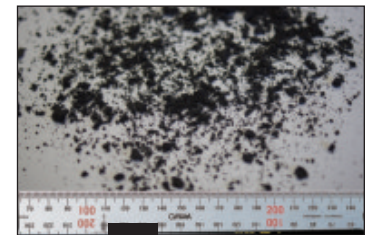
**5** CAST OR DUCTILE IRON



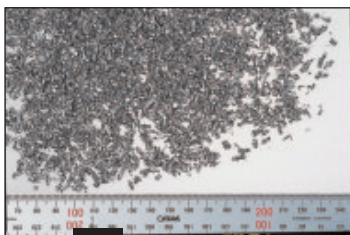
**6** HARDENED STEEL GRINDING



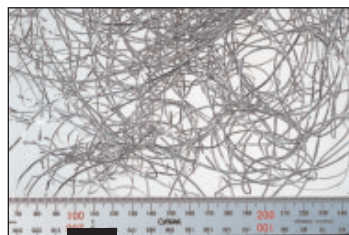
**7** BRASS



**8** COMPOSITE



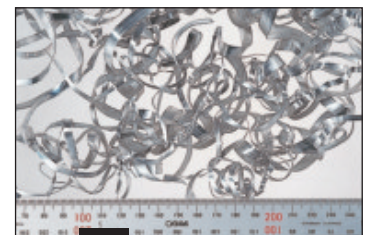
**9** ALUMINUM



**10** ALUMINUM



**11** ALUMINUM



**12** ALUMINUM

MATERIAL				STEEL, STAINLESS STEEL, IRON, ALUMINUM, OTHER ALLOYS	STEEL, STAINLESS STEEL, IRON, ALUMINUM, OTHER ALLOYS	MILD STEEL, CAST IRON	COMPOSIT	ALUMI- NUM	STEEL	STEEL, STAINLESS STEEL, IRON, ALUMINUM, OTHER ALLOYS
APPLICATION				Grinding	Super Finishing	Honing	Machining	High Speed Milling	Deep Hole Gun Drilling	Parts Washing, Quenching, Induction Hardening, Drawing
Barrier Filters	Drum Filter (1,3)	50 micron	Endless Belt	✘	✘	✘	✘	✘	Good	Good
	HPF (1,2,3)	20-50 micron	Paper	Good	Good	Good	Better	Better	Better	Better
	VacuFilter (1,3)	10-30 micron	Paper	Better	Better	Better	Best	Best	Best	Best
	Pressure Filter (1,2,3)	8-20 micron	Endless Belt/ Disposable Media	Best	Best	Best	✘	✘	✘	✘
Sepa- ration Filters	AT Cleaner (2,3,4)	Down to 10 micron	Centrifuge	Good	Good	Good	✘	☎	☎	☎
	Bar Mag (1,2,3,5)	20 micron	Magnet	Good (5)	Good (5)	Good (5)	✘	✘	☎	☎
	SSAT (3,4,5)	Down to 10 micron	Magnet/ Centrifuge	Better	Better	Better	✘	✘	☎	☎

✘ NOT RECOMMENDED  
☎ Contact Mayfran for more information

**NOTES:**

- 1) The selection chart assumes chips will be processed with water-soluble coolant or straight oil.
- 2) Bulk material must be removed before filter.
- 3) Consult Mayfran for final application selection.
- 4) Water-soluble coolant only.
- 5) Ferrous material only.

